

DOUBLE SPLIT SUPPORT

THE DOUBLE SPLIT SUPPORT is designed for installation of 2 panel antennas up to 2,6 m (8,5 ft).

FLEXIBILITY

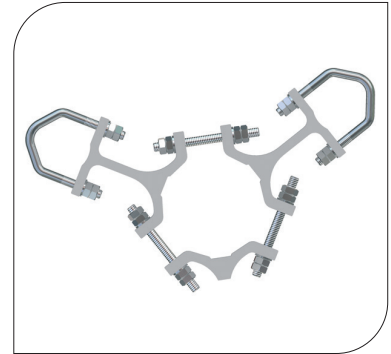
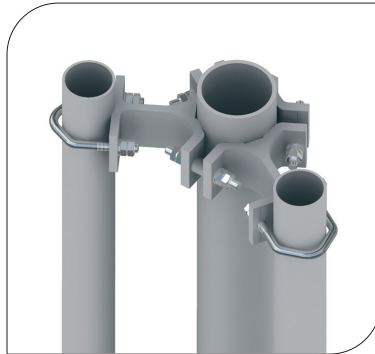
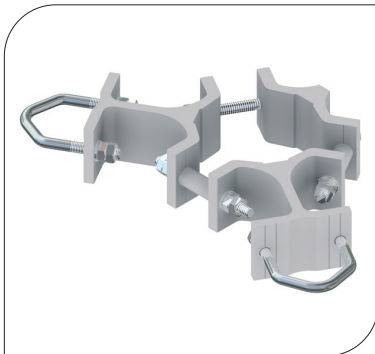
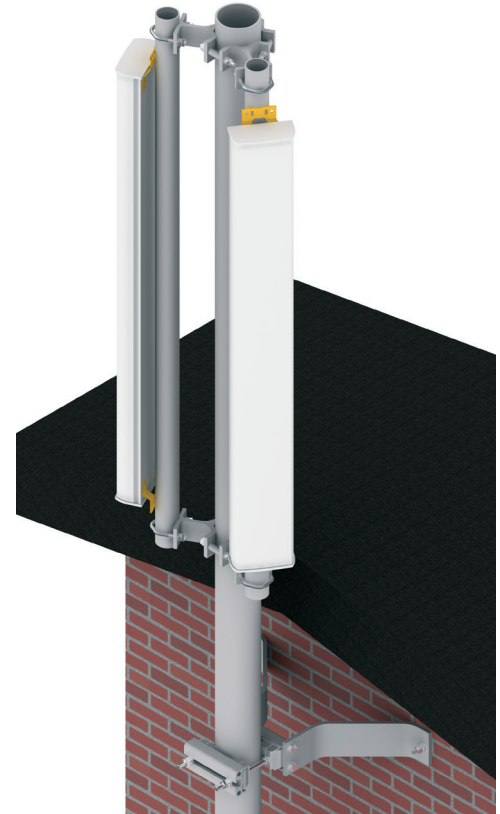
The support is mounted to a centre tube with dimension Ø75 to 120 mm (3,0 to 4,7 in). The antenna mounting tube can be Ø45-60 mm (1,8 to 2,4 in).

QUALITY

All components are made of anodized aluminium and stainless steel which gives the support excellent corrosion resistance.

EASY ASSEMBLY

The choice of materials makes the product very light which makes the handling and installation very easy.



ORDER AND TECHNICAL INFORMATION

DRAWING NO:	CD 189023		CD 189123	
MOUNTING SPAN:	MOUNTING TUBE: Ø45-60 mm (1,8 to 2,4 in)	CENTRE TUBES: Ø75-100 mm (3,0 to 4,0 in)	MOUNTING TUBE: Ø45-60 mm (1,8 to 2,4 in)	CENTRE TUBES: Ø100-120 mm (4,0 to 4,7 in)
FUNCTION DESCRIPTION:	Antenna support kit in two levels with space for 2 mounting tubes on 1 centre tube. Typical for installation of panel antennas.			
PACKAGE DIMENSIONS:	LENGTH: 285 mm (11 in) 285 mm (11 in)	WIDTH: 190 mm (7,5 in) 190 mm (7,5 in)	HEIGHT: 150 mm (5,9 in) 150 mm (5,9 in)	WEIGHT: 4,2 kg (9,3 lb) 4,4 kg (9,7 lb)

NOTE! Mounting tubes are not included. Must be ordered separately.